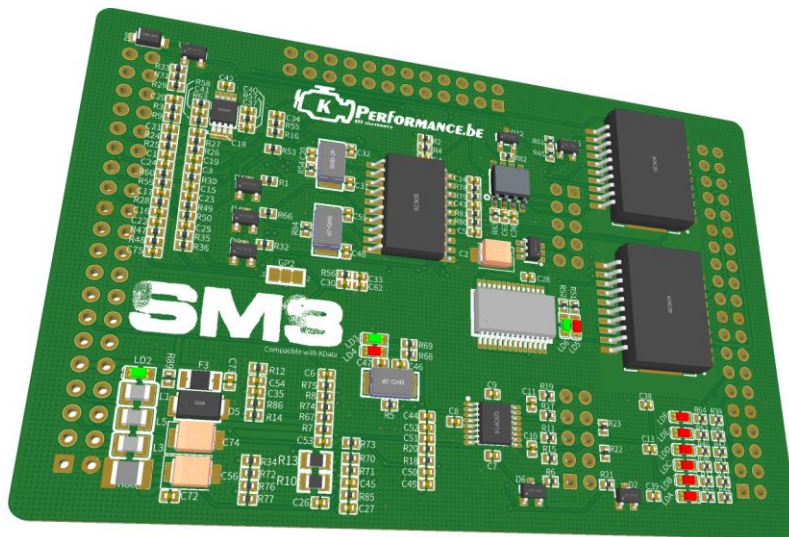




SM3 ECU User manual

Software, drivers and latest info can be downloaded at



www.Kperformance.be

Introduction

Congratulation buying the SM3. The circuit is based on Megasquirt 3. It was refined build 100% AEC-Q100 compliant and IP65 grade! A KPerformance Wideband Lambda Controller is also part of the SM3 ECU. A Bosch LSU 4.9 sensor can be connected directly without the need to buy a extra controller. Even a optional Oled-display can be connected to visual see Lambda and temp values of the sensor. (4.2 can also be connected with small resistor changes)

Included in Delivery

- ☐ SM3 ECU
- ☐ USB cable pre-crimped
- ☐ User manual
- ☐ ECU Connectors pins and cover

Software

Recommended tuning software TUNERSTUDIO and/or Megalog viewer

USB Driver

The onboard FTDI chip simulates a serial RS232 connection:

Tunerstudio – Communications – Settings:

USB and Wireless (registered Version), Auto , 115200 Baud

OnBoard Bluetooth

Its Pre-configured and ready to use simulating a serial RS232 connection.

Name: KPerformance BT with pin: 1234 or 0000

USB Port

The USB port of the SM3 is equipped with 8kV ESD protection of VBUS and Data lines. The data chip and ESD protection is "USB powered". This fact simplifies the optimization of the start-up behaviour significantly when you restart the ignition, the PC won't download the USB driver each time. The USB chip is of course downwards compatible, which means it can be used both with USB 3.0, 2.0 and 1. To achieve maximum water tightness IP65 grade we pre-crimp the USB on to the ECU connector

Electrical connections

Like all other voltage supplied parts - must be preceded by a fuse in function of cable section.

Recommended cable types:

- Ignition: min 1.5 mm²
- Injection: min 1.5 mm²
- VR sensor: min 0.5 mm²
- shielded Sensors: min 0.5 mm²
- Others: min 0.75 mm²

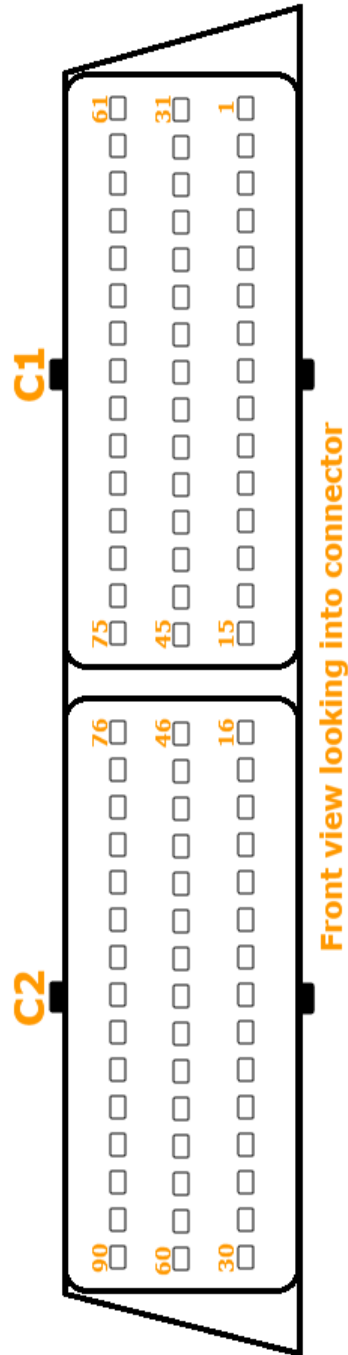
Fuses

Recommend using a 2A fuse for protecting the SM3a. A automated 5A PTCC fuse is integrated on the board. It will reset itself after cooling down/solving issue or short circuit.

Onboard LED's functions

LED Label	Color	Function
LD2	GREEN	5V power supply
LD3	GREEN	O2 controller standby/power
LD4	ORANGE	O2 controller heating/measuring
LD5	GREEN	USB Data packets
LD6	ORANGE	USB Data packets
LDA	ORANGE	Ignition pulse A
LDB	ORANGE	Ignition pulse B
LDC	ORANGE	Ignition pulse C
LDD	ORANGE	Ignition pulse D
LDE	ORANGE	Ignition pulse E
LDF	ORANGE	Ignition pulse F

Pinouts

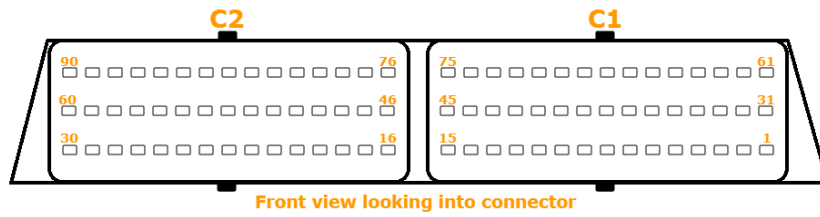


Pin Number	Pin Label	Function
1	High Power IGN output1	Ignition output Passive 1
2	High Power IGN output4	Ignition output Passive 4
3	INJ output6	Injection valve 6
4	TTL level GNA1	Ignition output Smart 1
5	TTL level IGND1	Ignition output Smart 4
6	NA	NA
7	INJ output 5	Injection valve 5
8	GND	Ground
9	GND	Ground
10	Power input	Input Voltage 8-16V
11	Power input	Input Voltage 8-16V
12	VR-2P	VR2 positive/CAM Input
13	VR-2N	VR2 negative input
14	VR-1P	VR1 positive/CRANK input
15	VR-1N	VR1 negative input
16	CAN H	CANBUS HIGH input
17	CAN L	CANBUS LOW input
18	CLT	Coolant sensor input
19	MAT	Air Temp sensor input
20	MAP	MAP sensor input
21	TPS	Throttle sensor input
22	Additional LSU4.9	Additional LSU4.9 GREEN
23	Additional LSU4.9	Additional LSU4.9 BLACK
24	Additional LSU4.9	Additional LSU4.9 RED
25	Additional LSU4.9	Additional LSU4.9 YELLOW
26	Additional LSU4.9	Additional LSU4.9 WHITE
27	OXY2	External OXY bank 2 input
28	GND	Ground

SM3 ECU r1 User Manual Kperformance

29	+5V	+5V Power Supply Sensors
30	+12V Power Supply LSU	+12V Power Supply LSU's
31	High Power IGN output2	Ignition output cylinder 2
32	High Power IGN output5	Ignition output cylinder 5
33	INJ output 4	Injection valve 4
34	TTL level IGNB1	Ignition output Smart 2
35	TTL level IGNE1	Ignition output Smart 5
36	NA	NA
37	INJ output3	Injection valve 3
38	GND	Ground
39	NA	NA
40	Flex	Flex sensor input
41	PT4	Programmable Output 1A
42	Nitro2	Programmable Output 1A
43	Nitro1	Programmable Output 1A
44	Boost	Programmable Output 2A
45	Tacho	Programmable Output 1A
46	Knock1	Knock Sensor1
47	Knock GND	Knock Ground
48	Knock2	Knock Sensor2
49	NitroIN	Programmable Input
50	JS12	Programmable Input
51	PP5	Programmable Input
52	Onboard LSU4.9	LSU4.9 GREEN
53	Onboard LSU4.9	LSU4.9 BLACK
54	Onboard LSU4.9	LSU4.9 RED
55	Onboard LSU4.9	LSU4.9 YELLOW
56	Onboard LSU4.9	LSU4.9 WHITE
57	OXY1	External OXY bank 1 input
58	GND	Ground
59	EGT1+	K-type Thermocouple

60	EGT1-	K-type Thermocouple sensor
61	High Power IGN output3	Ignition output Passive 3
62	High Power IGN output6	Ignition output Passive 6
63	INJ output6	Injection valve 6
64	TTL level IGNC1	Ignition output Smart 3
65	TTL level IGNF1	Ignition output Smart 2
66	NA	NA
67	INJ output1	Injection valve 1
68	GND	Ground
69	JS7	Programmable pin
70	VTT	Programmable Output 2A
71	TBL	Programmable pin
72	SDA	Onboard O2 oled
73	SCL	Onboard O2 oled
74	PK3	Programmable Input
75	PK1	Programmable Input
76	VBUS	External USB Connection
77	DPUSB	External USB Connection
78	GNDUSB	External USB Connection
79	DMUSB	External USB Connection
80	NAND1	Programmable pin
81	NAND4	Programmable pin
82	PT5	Programmable Input
83	AD7	Programmable Input
84	BARO	Baro sensor Input
85	PK7	Programmable pin
86	IDLO	Idle Valve Open
87	IDLC	Idle Valve Close
88	IAC2	Programmable Output 1A
89	IAC1	Programmable Output 1A
90	FP	Fuel Pump relay Output

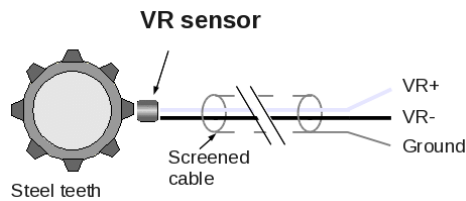


Engine Speed Measurement

The SM3 supports VR, Hall and Optical engine speed sensors.

VR sensors inputs:

- ☐ CRANK: VR-1N&VR-1P
- ☐ CAM: VR-2N&VR-2P

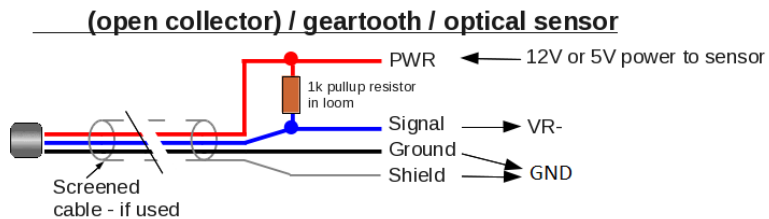


!Rising Edge trigger is most accurate for VR-type sensor !

Hall & Optical inputs:

- ☐ CRANK: VR-1N
- ☐ CAM: VR-2N

!Leave VR-1P & VR-2P floating (do not connect Positive side)



Throttle Position Sensor

The throttle potentiometer is connected up by a 3-wire cable. +5V and GND are connected to the outer static pins of the potentiometer. The voltage relating to the throttle position is tapped via the sliding contact and connected to the input TPS (Throttle Position Sensor). The corresponding calibration is done under TunerStudio via “Tools” – “Calibrate TPS”

Digital Input

There are digital inputs that can be used for example as “Launch Control”. The corresponding function has to be defined in Tunerstudio.

Programmable Pins

There are PINS that can be user programmed as INPUT or OUTPUT and has to be defined in Tunerstudio.

Programmable Output

There are High Current OUTPUTS that can be user programmed and has to be defined in Tunerstudio.

Idle Speed Controller

The SM3a supports both the 2-pin and the 3-pin idle speed controller. Pin connections of the idle speed control:

2-pin: +12V & FDLO

3-pin: +12V & FDLO (open) & FDLC (closed)

Ignition

The ignition coils can be activated directly by the integrated power drivers. We recommend using a shielded multi-conductor cable for connection. The SM3 is equipped with 6 power drivers enabling sequential activation of 6 passive ignition coils or 12 in wasted spark. We designed the outputs so it's possible to trigger 6 Passive coils **OR** 6 smart coils by using the correct ECU connector output pins!

- 6x Passive Coils Power Ignition outputs (Ground Activated Coils)
- 6x Smart Coils Ignition Outputs (5V TTL Activated Coils)

Do not connect/use both Ignition methods at the same time!

Spare un-used Ignition outputs can be used as additional programmable outputs.

Injection

There are 6 injector outputs (INJ1-6) ; The injection valves are supplied with +12 V via the ignition switch and the ground wires of the injectors are activated via the SM3a

Attention:

The setting whether the injection valves are of high or of low resistance has to be entered in Basic Settings” – “Injector Characteristics” strictly before the first test run because wrong settings can cause destruction of the injection valves or of the SM3a.

Starting values (no guarantee):

High impedance: PWM Current Limit (%): 100 PWM
Time Threshold (ms): 25.5

Low impedance: PWM Current Limit (%): 30 PWM
Time Threshold (ms): 1.5

Onboard Wideband Lambda Controller

A Bosch LSU 4.9 sensor can be connected directly without the need to buy a further controller. (4.2 can also be connected with 2 small resistor changes) Even an optional I2C Oled-display can be connected to visual see Lambda and temp values of the sensor. (SDA CLK 5V GND)

Calibration data TUNERSTUDIO custom linear wideband:

0V= AFR 22.39

5V= AFR 7.39

Starting of the controller can be done by grounding GP2 via dipswitch or software wise by selecting Output “Ignition G” with customer requirements setting. Not grounding GP2 will result in a standby lambda controller.

le start lambda controller after 30sec of engine start under tunerstudio

Onboard Knock

The knock IC uses a purpose designed dual knock sensing amplifier chip to filter knock signals.

Inputs Knock1 & GND & Knock2

Onboard EGT

The EGT IC uses a purpose designed amplifier chip to filter K-type sensor signals and uses AD6 input

CAN Bus

Like for Megasquirt the CAN Bus hardware is populated on the board, but has to be programmed accordingly by the user if desired. For further information on this item please read the respective Megasquirt /MSextra websites.

User Remarques and info

